

Lutheran Social Services of  
North Florida



606 W 4<sup>th</sup> Ave, Suite 11  
Tallahassee, FL 32303

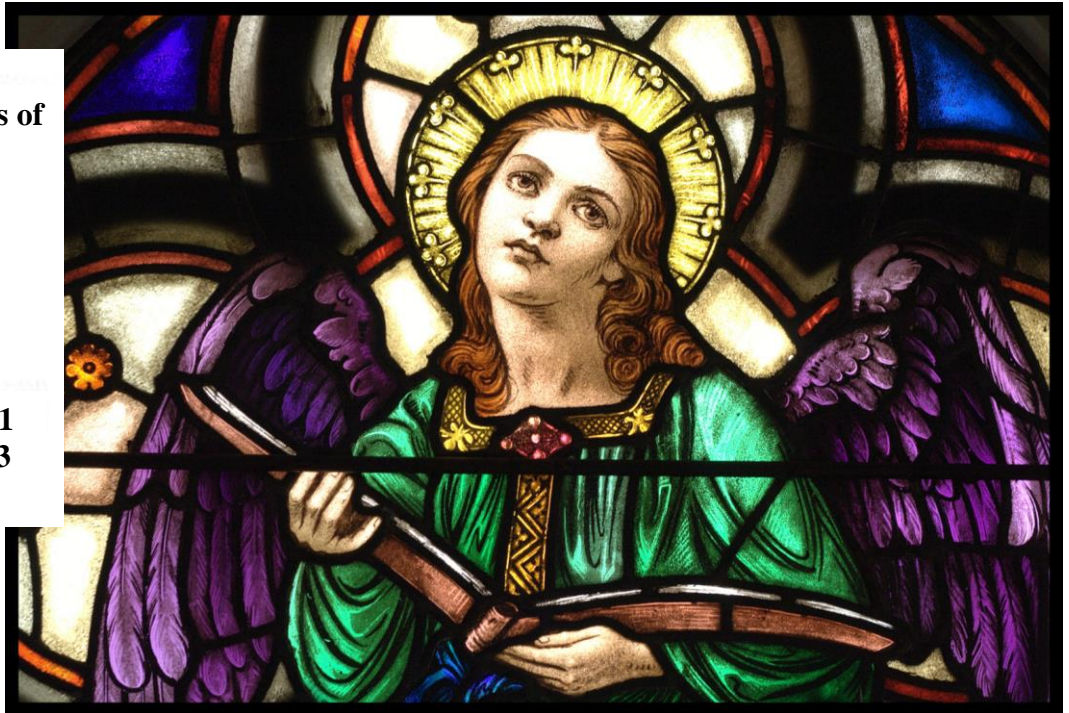
Fall 2016

2016/2017  
Board Members

Mark Heidorn - President  
Emily Millett - Vice-President  
Mary Hafner - Secretary  
Giselle Marsh - Treasurer  
Daryl Barowicz  
Camille Davis  
Barbara Ehlmann  
Roosevelt Griffin  
Tiffany Lynn  
Beth McBride  
Haley McCrary  
Gary Ranzinger  
Cory Thorpe

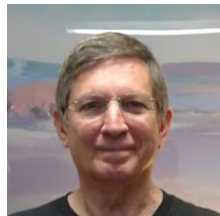
Staff

William Stone  
Peter Ott  
Malinda Henderson  
Amy Crowson



# The Faithful Servant

## A Message from the President



Above: President,  
Mark Heidorn

Many of you are familiar with Wheat Ridge Ministries, a Lutheran social service agency with a mission to stimulate sustainable health and human care throughout the world. Wheat Ridge Ministries has supported our *Success Forward* family advocacy program through a grant for the past three years. We are grateful to Wheat Ridge for their support in our community.

My wife Priscilla and I knew Wheat Ridge's former Executive Director, Edward May, a visionary person, in the 1960s. In his book, *I was Sick and You Visited Me*, he conveyed the meaning of service:

*Use us as your instrument*

*to accept those who have known mostly rejection,  
to love those who know mostly hostility,  
to support those who have known mostly failure,  
to fill those who have known mostly emptiness,  
to help integrate those who have been fragmented,  
to be a friend to those who have known mostly isolation.*

*And grant that in receiving us they may know that they have received you,  
who dwell in us with your healing power to give fellowship and wholeness*

What better time than now to think about opportunities to serve and why we do so. The LSSNF Board and staff wish you a blessed Christmas season.

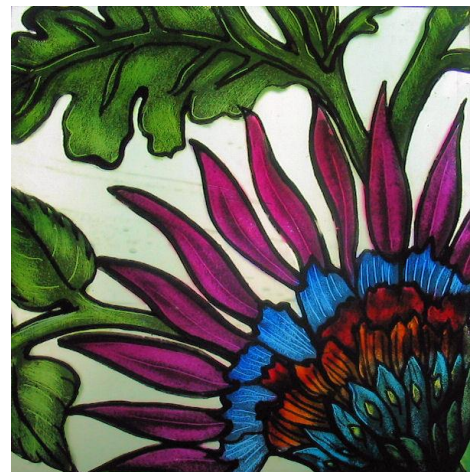
Mark Heidorn, Board President



Lutheran Social Services of North Florida is beginning the renovation of the French Quarter apartment facility, located at 606 W 4<sup>th</sup> Ave, Tallahassee, FL, the French Town Neighborhood. This extensive renovation will significantly upgrade these apartments so that they can be utilized by independent living, low-income seniors. Improvements include: enhanced lighting, new accessibility features, improved parking, community room facilities, additional security features, new air conditioning and heating systems, new appliances, new cabinets, updated bathrooms, and many aesthetic exterior and interior improvements such as large awnings, painting, new doors, signage, etc. This rehabilitated building will not just enhance the lives of the low-income elderly residents, but will act as an economic anchor and stimulus for the revitalization of the entire French Town Community.



Lutheran Social Services of North Florida is proud to announce the formation and implementation of a new program: **Better Angels Senior Housing**. Beginning in 2017, this program will provide high-quality, affordable, service enriched, housing for the increasing number of low-income elderly in Leon County. This new program will provide a secure, healthy, managed place to call home for local low-income elderly individuals seeking an independent living situation. As this population continues to grow in Leon County, LSSNF sees its mission to address this burgeoning human service need and is honored to ensure that this population can live with dignity, acceptance, a lack of isolation, and neighborly love and support.



**The Computer Refurbishing and Technical Assistance Program would like to thank our many donors, grantors, and friends!**



Capital City Bank Foundation • Wells Fargo • Tyndall Federal Credit Union • CESC Inc • Tallahassee Sunrise Rotary • Leon County • The following State of Florida Departments: Elder Affairs, Health, Environmental Protection, Revenue, Education, & Law Enforcement • Lock'D Computer Solutions • Brandt Information Services • Mainline Information Systems • The Earl Bacon Agency • Berger Singerman LLP • Novey Law Firm • Novey Animal Hospital • Rogers, Gunter, Vaughn Insurance • Paul A. Posey & Co. • Leon County Clerk of Courts • TalTech Alliance • Partners Bridging the Digital Divide • and many other thoughtful and generous businesses and individuals!

**The CRTA Story**

Generous local individuals, businesses, and State of Florida agencies donate unwanted computers and peripherals. Great local high-school and university student volunteers/interns refurbish these computers to a high Microsoft Registered Refurbisher standard. Then, through numerous collaborating agencies / charities / schools, and a referral system, these refurbished computers are distributed to low-income middle and high school students, veterans, and persons with disabilities, etc. for their ownership, which allows the recipients to overcome the obstacle of the Digital Divide.



These new, proud computer owners can seek/gain employment, further their education, and keep in touch with their friends and family.

Refurbished computers are also utilized by other human service agencies to set up computer labs serving a diverse population such as the children of incarcerated individuals, families with children experiencing homelessness, refugees, and others. Another

important component of the program is that any unusable donated computer technology is disposed of in an environmental and responsible manner, so that it does not simply enter the waste stream, water table, or local landfills.

**Congratulations CRTA Interns!**



Lutheran Social Services of North Florida is proud of, and wants to congratulate, our many student interns who have worked with us refurbishing computers for ownership by local low-income individuals and families. Thanks to the skills and technical experience acquired while working under the instruction of the CRTA program manager, these fine young people have recently gone on to careers with:

Flowers Foods - Infinity Software – Syn-Tech Systems - TEKsystems – NASA - Hewlett-Packard - Oracle Corporation - General Motors - City of Tallahassee

# Save the Date!



The Young Actor's Theater will present a benefit performance of

## Alice in Wonderland

for the programs of LSSNF on Sunday, February 26, 2017 at 7:00pm. Please help Lutheran Social Services by supporting this production. Please join us before the show and during the intermission for refreshments and camaraderie beginning at 6pm! For more information about purchasing tickets or underwriting, please call (850) 575-4309 or email [info@lssnf.org](mailto:info@lssnf.org)



### Ticket Price For This Show

\$20.00 per person, all seating  
(includes show and refreshments)



### Underwriting Support Levels

**Bronze:** \$100

**Silver:** \$250

**Gold:** \$500

**Sapphire:** \$1,000

The Faithful Servant

Fall 2016

info@LSSNF.org  
<http://LSSNF.org>  
(850) 575-4309  
606 W 4th Ave, Suite 11  
Tallahassee, FL 32303

The logo for Lutheran Social Services of North Florida, featuring a red cross with hands forming the arms and legs.

Lutheran Social Services  
of North Florida